

Ring Size

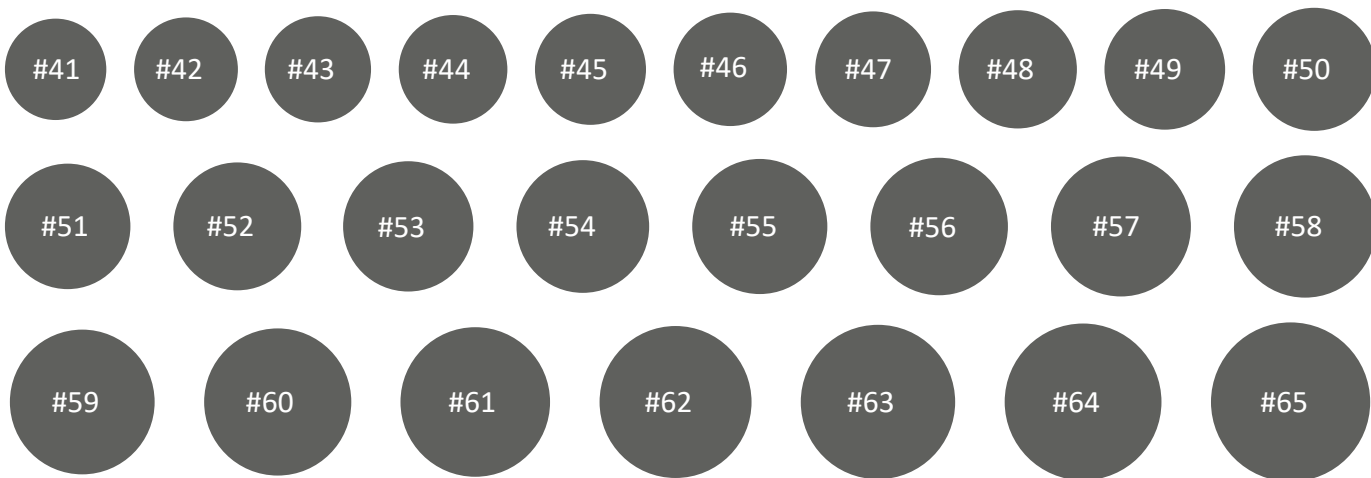
Before you start, you should check whether your printing is correct.

Measure the line below so as to be exactly 5 centimetres. You have to select the option of printing the page to its actual size or at a 100% scale.



Method 1 - By using a ring that you already own

In case you already own a closed ring (i.e. a ring that does have any openings) and it is perfectly round inside, place it on the following circles until you find the circular disc that matches exactly the inner diameter of your ring. Note down the number that is written on the inside of the circle and you are ready. In case that none of the circles below is an exact match, find the one that is applied most correctly.



The circular disc does not exactly match the inner diameter of your ring.



You should pick a bigger circular disc.

The circular disc does not exactly match the inner diameter of your ring.



You should pick a smaller circular disc.

The circular disc matches exactly the inner diameter of your ring.

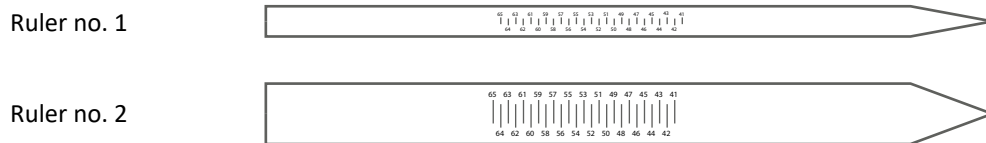


This is your size.

Ring Size

Method 2 - By using our ruler

1. If you want to measure a thin ring similar to a wedding ring, cut ruler no. 1. If you want to measure a wide ring like our crown, cut ruler no. 2.
1. Cut the arrow-shaped outline of the ruler using a pair of scissors.
2. Put the straight tip of the ruler on the finger you want to measure. Keep it steady on your finger and wrap the remaining part tightly around the finger.
3. You find your size where the tip of the arrow ends. In case that it does not touch precisely on any line, then you should consider that your size is the one right after that.



Ring Size Conversions

Inside Diameter		Inside Circumference		Ring Size		
(in)	(mm)	(in)	(mm)	United Kingdom	United States	Europe
0,59	15,2	1,86	47,4	I	4 1/4	47 1/2
0,60	15,4	1,89	48,0	I 1/2	4 1/2	48
0,61	15,6	1,92	48,7	J	4 3/4	48 1/4
0,62	15,8	1,94	49,3	J 1/2	5	49
0,63	16,0	1,97	50,0	K	5 1/4	50
0,63	16,1	1,99	50,6	K 1/2	5 1/2	50 1/2
0,64	16,4	2,02	51,2	L	5 3/4	51
0,65	16,6	2,04	51,9	L 1/2	6	52
0,66	16,8	2,07	52,5	M	6 1/4	52 1/2
0,67	17,0	2,09	53,1	M 1/2	6 1/2	53
0,67	17,2	2,12	53,8	N	6 3/4	53 1/2
0,68	17,4	2,14	54,4	N 1/2	7	54
0,69	17,6	2,17	55,1	O	7 1/4	55
0,70	17,8	2,19	55,7	O 1/2	7 1/2	55 1/2
0,71	18,0	2,22	56,3	P	7 3/4	56
0,71	18,2	2,24	57,0	P 1/2	8	57
0,72	18,4	2,27	57,6	Q	8 1/4	57 1/2
0,73	18,6	2,29	58,3	Q 1/2	8 1/2	58
0,74	18,8	2,32	58,9	R	8 3/4	59